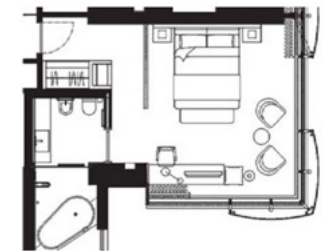
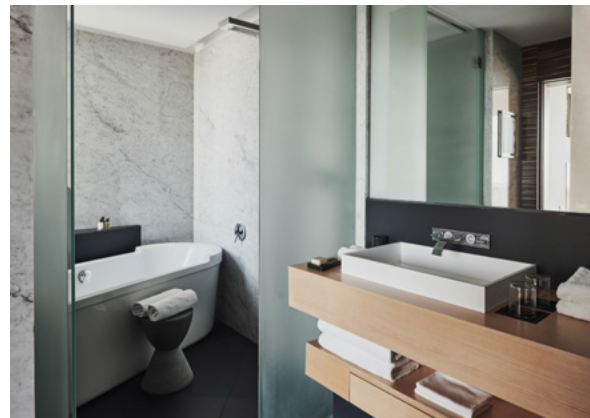


HARBOUR VIEW JUNIOR SUITE

With a double view on the bay and the city of Naples, our Harbour View Junior Suites are certainly the most original and bright luminous rooms of the hotel. Full-height glass walls, unique design and a Philippe Starck designed bathtub: the Harbour View Junior Suites with their cosy and elegant atmosphere are perfect for business travellers but also for leisure stays. Harbour View Junior Suites are located at the corners of the Romeo hotel, from the fifth to the sixth floor, with a view over the harbour and the city of Naples.



With an area of approx. 40 sqm / 430 sqf, our Harbour View Junior Suites can accommodate up to two adults and one baby up to 2 years old. Cot available on request.